

# environment

2014/15





**A**t Pinnacle, our mission is to provide discriminating divers with the warmest, most comfortable thermal protection possible to enhance their aquatic experiences, wherever it may lead.

Pinnacle takes the best available production techniques and materials to create quality products that are built to last. Our products are the result of exhaustive research, development and innovative spirit combined with a passion for the environment.

Our team at Pinnacle is the brain behind many of the suits you have seen marketed by some of diving's largest companies. From behind the scenes, we've been dedicated to staying at the forefront of technology being pioneers in product development. In addition to being OEM designers and manufacturers, we've been inventors, delivering many of the world's firsts, including wrist seals, heat reflective laminates, and ripple kneepads. We've designed suits for outer space (NASA and the European Space Agency) and deep under the surface of the ocean (with the British and Dutch navies).

Since we began marketing products under our own name, Pinnacle has become recognized as an elite producer of thermal protection products. We are proud to prioritize quality over quantity and have never believed in following others, that is why you'll see features on Pinnacle products that you won't find anywhere else. From revolutionizing the wetsuit industry with the introduction of our patented Merino™ lining, which enabled divers to be warmer without adding bulk or buoyancy, to our patented neck seals, unique

collars and zipper routing. Our dedication to design makes us the brand of choice for discriminating divers.

At Pinnacle we are dedicated to improving your experience whether you are exploring under ice at one of the Earth's poles or gliding over tropical reefs on the Equator. Pinnacle has the products that will enhance your adventures.

2015 is an exciting time for Pinnacle as we launch our Merino Clothing line; taking the Merino™ lining we've become renowned for and applying it to clothing that can be used everyday. The proprietary knowledge we've developed with Merino™ over the past decade has allowed us to create materials that are perfect for today's diver and outdoor enthusiast. From our exclusive high stretch base layers to our patented waterproof, yet breathable Merino jacket - we have everything you'll need to keep warm and comfortable on your next adventure.

All the best adventures  
The Pinnacle team



All underwater images reproduced with kind permission from Scubazoo

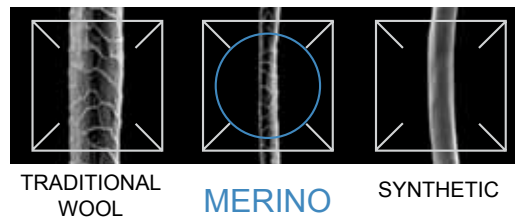
[www.PinnacleAquatics.com](http://www.PinnacleAquatics.com)

# WHY MERINO?

3

Pinnacle's patented Merino™ lining system is quite simply the best wetsuit and drysuit lining system ever developed for the aquatic environment. Discerning divers who demand the most from their thermal protection systems insist on Pinnacle and Merino™, and they settle for nothing less. This unique material is the best-performing way to line a suit ever devised, providing more warmth, comfort, and odor control than any other.

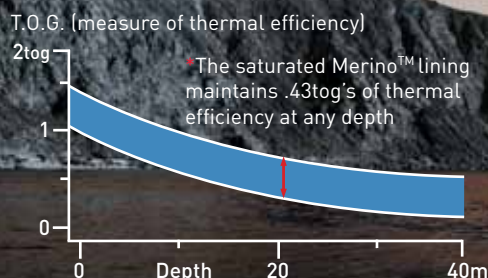
Scientific laboratory testing found that a wetsuit lined with Merino™ is 35% more thermally efficient than a wetsuit made with a traditional lining. Under the new CE testing guidelines, all of Pinnacle's Merino™ lined suits achieved the highest possible ratings for insulation effectiveness. This is unbiased, independent proof that Pinnacle's Merino™ lining system is a superior insulator. Furthermore, Merino™ lined wetsuits are not as affected by depth as most suits.



In addition to having greater insulating properties, Merino™ offers other benefits to divers as well. Merino™ lined suits slide on and off easier, particularly when wet, and they are more comfortable to wear against the skin because of the super-fine and extremely smooth fiber structure. Merino's™ moisture absorption properties and uneven surface structure also prevent the build-up of bacteria, allowing these suits to stay fresher smelling longer.

Merino™ is the ideal wetsuit lining for so many reasons. It has been proven to be far more efficient than traditional linings. It is softer, more comfortable, and it slides on easier than standard wetsuits. It is exothermic, faster drying, and more hygienic than other lining material as well as being a renewable resource. But the real beauty of slipping into a Merino™ lined wetsuit is the beauty of nature herself. It just feels right.

To learn more visit us  
[www.PinnacleAquatics.com/merino](http://www.PinnacleAquatics.com/merino)



# DRYSUITS

The BLACK ICE is on the cutting edge of drysuit technology, being the world's first Merino™ lined drysuit. Combining the flexibility and durability of thermocompressed neoprene with moisture controlling Merino™, enabling comfortable diving in the most extreme conditions.

## Black Ice



- The world's first Merino™ lined drysuit
- Completely constructed from 7mm neoprene thermocompressed to 4mm for tremendous insulation, flexibility and durability
- 100% lined with Pinnacle's patented Merino™ lining adds significant warmth, fights odor, absorbs perspiration and other water vapor, leaving a drier diver
- Neoprene socks with small diamond sole
- Self-donning front-entry design with YKK-BDM military grade brass dry zipper
- Protective zipper flap with external zipper
- Neoprene neck seal for maximum warmth
- Bell-style latex wrist seals are the thickest grade available
- Pocket on each leg comes complete with drain grommet, looped webbing attachment points, Velcro™ closure, and elastic shock cord
- Si-Tech low profile, high flow inflation and exhaust valves
- Includes Deluxe Drysuit Bag and Merino™ lined zippered 7mm drysuit hood, and Suspenders included at no extra charge
- Heavy duty knee pads
- Plastisol pattern on seat for extra grip and abrasion resistance
- The warmest, driest, and most comfortable drysuit ever made

The EVOLUTION 2 is a rugged, durable, all-Cordura front-entry trilaminate drysuit. Rugged enough to be ideal for commercial and military use, yet comfortable and versatile enough for recreational divers.

## Evolution 2

- Heavy-duty 220 gram Cordura™ exterior is strong and resists cutting and abrasions
- Self-donning front-entry drysuit
- Cordura™ material is cut on the bias, making material as strong as ever, yet more flexible
- Diagonal front-mounted YKK-BDM zipper with protective zipper flap
- Reinforced seat and knees stand up to the rigors of wreck and technical diving
- Telescoping torso with elastic crotch strap aids in donning allowing for greater range of motion
- Standard pocket on each leg with Velcro™ closure, grommeted drain hole, three attachment points, and elastic shock cord
- Si-Tech low-profile 360-degree inflation and exhaust valves
- Internal elasticized waistband and suspenders improve fit and comfort
- Latex neck and wrist seals are of the heaviest grade available for incredible durability, yet are extremely comfortable
- Standard boots are made of vulcanized rubber with 5mm neoprene insulation and are available in sizes 5 through 15
- Can be fitted with neoprene socks for no additional charge
- Includes carry bag, inflation hose, drysuit hood and suspenders at no extra charge
- Neoprene collar covers the latex neck seal for added warmth
- Available in 14 male sizes, 7 female sizes





# DRYSUITS & UNDERGARMENTS

The Liberator drysuit is a fully self-donning front entry drysuit constructed from a trilaminate ripstop nylon that is durable yet lightweight and flexible.

## Liberator

5

- Fully self-donning front-entry drysuit
- Trilaminate ripstop nylon is durable yet lightweight and flexible
- Telescoping torso with elastic crotch strap aids in donning and allows for greater range of motion
- Neoprene socks attached
- Diagonal front-entry YKK Aqua Seal zipper
- Protective zipper flap
- Heavy weight latex neck and wrist seals
- Bell-style latex wrist seals fit almost any diver without trimming
- Standard pocket on each leg comes complete with drain grommet and Velcro™ closure
- Drysuit bag, inflation hose and suspenders included at no extra charge
- Si-Tech low profile, high flow 360-degree rotating inflation and exhaust valves
- Neoprene over collar for extra warmth and comfort
- Extra-thick protective knee panels
- Drysuit Overboots sold separately.



The Tecline Undergarment is perfect for divers challenging the coldest waters, those diving for extended duration, or those who chill easily.

## Tecline Undergarment

- Over 490g/m2 of total insulation in three layers
  - 40g outer high tenacity wind resistant nylon
  - 200g polyester wadding
  - 250g inner polyester fleece with anti-pilling treatment
- Adjustable, insulated collar
- Two-way convenience main zipper with thermal backing panel
- Super stretch neoprene panels in the back and waist facilitate easy bending and crouching
- Rib knit high stretch underarm gussets
- Pre-bent arms and legs with reinforced elbows and knees
- Thinner insulation panels at the back of knees and front of elbows to reduce muscle fatigue
- Elastic foot stirrups & thumb loops to keep insulation in place while donning
- Neoprene wrist cuffs to help keep insulation in place while diving
- Internal suspenders for greater comfort before, during, between and after diving
- Zippered breast pocket and two hip pockets
- Venting panels at top and base of both arms to facilitate rapid suit venting for auto shoulder and cuff exhaust valves



The Temperate Undergarment is designed for use in cool to temperate waters, or for cold water divers who generate body heat or wish to wear other layers of insulation. Extremely soft and comfortable, the Temperate Undergarment also makes great after-dive wear

## Temperate Undergarment



- Two 125g/m2 layers of technical fleece insulation (total value 250g/m2)
- Very light and flexible
- Two-way main zipper for easy donning and convenience
- Thumb loops and stirrups help hold the undergarment in place while donning a drysuit
- Two fleece-lined hip pockets
- Machine washable

The INFERNO, Pinnacle's newest innovation, can be used as a drysuit undergarment as well (more details page 11)



- Constructed using a Tri-laminate material with various thermal linings inside, high stretch Lycra outside and a breathable membrane between adds warmth without buoyancy while under the water and wind resistance above
- New 320 gram merino™ fleece in the chest and traditional Merino™ lining in the back and sides to provide unprecedented warmth in the core
- Bi-laminate Merino™ lined material under the arms is 100% breathable to prevent overheating when out of the water
- Excellent for drysuit diving in less chilly water by itself or paired-up with any undergarment as layering for added thermal protection



**A layering system that will add significant thermal protection without buoyancy.**

## DRYSUIT ACCESSORIES

With over 40 years' experience, our technicians at Pinnacle can customize a drysuit to fit your needs:

- Replaceable Silicone Seals
- Dry Gloves
- Urine Relief Valve
- Convenience Zipper



CONVENIENCE ZIPPER



DRY GLOVES



TECLINE BOOT



REPLACEABLE SILICONE



URINE RELIEF VALVE

# MERINO CLOTHING

The Pinnacle merino clothing line is the perfect accompaniment before, during and after any dive. The base layers are ideal for the cold early morning start and will also enhance any drysuit system. The sock and glove liners will add significant warmth in any conditions while the waterproof Humboldt jacket is perfect to keep you warm and dry.

## Merino Clothing



7

BASE LAYER LS 260



BASE LAYER SS 180



HUMBOLDT JACKET



BASE LAYER PANTS 260



EXPEDITION SOCK



MERINO BOOT LINER



MERINO GLOVE LINER



## naturally warmer

- Base layers constructed from 95% merino and 5% elastic providing high 4-way stretch for unrestricted movement and comfort
- Long sleeve top features extra-long arms with thumb slots for warmth and ease of donning
- Pants have a relaxed fit with fly and high waist band for added comfort and convenience
- Humboldt jacket made from a waterproof breathable material with merino lining throughout for unsurpassed warmth and comfort
- Expedition Sock has an elasticated instep, ankle and top ensuring sock stays in place
- Merino Boot and Glove liners will add significant warmth in wet or dry conditions



### Thermal Control

Pinnacle's Merino™ is perfect for all active sports. Specially designed with a high performance stretch knit that is breathable, lightweight and ultra fast drying.



### Odor Resistance

Merino's excellent moisture absorption and uneven surface structure prevents the build-up of bacteria, reducing infection and odors.



### Comfort

Supersoft and lightweight, Merino™ eliminates the itchy feeling associated with other wools. The softness of our Merino™ also helps to reduce chaffing in high action areas, such as under the arms.



### Easy Care

Not only does Merino™ have a natural crimp and resilience, making it resistant to abrasion, it also reduces the ability for soil particles to become embedded. Machine washable for easy care

# WETSUITS

The TEMPO and SIREN incorporate our patented Merino™ lining and high stretch elastiprene materials, providing the ultimate in warmth and comfort.

## Tempo 7, 5, 3mm



SIREN & GRAY TEMPO

- NEW! Gray color option available in Tempo suits
- A choice of 3mm, 5mm or 7mm thicknesses
- Pinnacle's patented Merino™ lining system adds up to 35% insulating power
- Merino™ dries quickly, helps the suit slide on, and is odor-resistant
- Next generation Elastiprene titanium lined neoprene throughout the wetsuit is even stretchier and more flexible than the original Elastiprene wetsuits
- Rear zipper is equipped with a extra thick spine flap and smoothskin seal to provide spine protection and reduce internal water movement
- Pinnacle Defense System (PDS) prevents zipper from biting into the spine pad
- Main zipper is equipped with long pull leash and Velcro™ tie down
- 8" ankle zipper seals make donning and doffing easier, yet seal water out
- Smoothskin ankle and O-ring wrist seals create effective barriers to water entry; trapping body-heated water inside the suit, keeping the diver warm
- Roll neck collar with newly redesigned neck closure and smoothskin seal provides a better water barrier and increased comfort
- Molded rubber shoulder pads help hold BC in place, pad the diver's shoulders and prevent suit wear
- Innovative multi-panel rubber knee pads protect the diver and the suit
- Double-glued and blind stitched construction
- Stress disks applied at all internal seam intersections for added strength
- Free wetsuit hanger with every suit
- 16 Male and 11 Female sizes



BLUE TEMPO

## Siren 7, 5 & 3mm



The ENDEAVOR suit is constructed in a high density 7mm neoprene, with heavy duty outer nylons and incorporating Pinnacle's latest seam-lock technology for maximum warmth and durability.

## Endeavor 7mm



- High-stretch titanium lined Elastiprene neoprene throughout the suit for greater warmth and flexibility
- Front mounted zipper allows for easy self donning
- Hoodless design allows the suit to be worn with a drysuit hood, a wetsuit hood, a hooded vest, or with the latest Inferno suit
- Anatomically pre-bent arms and legs to reduce bunching
- Tatex kneepads are flexible yet highly protective
- Small Diamond external material in high wear areas helps prevent suit abrasions and tears
- Molded rubber shoulder pads protect diver and suit as well as help keep BC in position
- 8" ankle zippers with unique chimney seal system
- Smoothskin o-ring wrist seals with Orcaskin forearm gussets
- Double glued and blind stitched construction with clear seam lock to reduce snagging or breaking



The CRUISER provides a means to enjoy many of the features and benefits of Pinnacle's higher end suits while still maintaining a budget. The CRUISER incorporates many design aspects that are superior to those found in other suits costing more than twice the price.

## Cruiser 7, 5 & 3mm

- One piece jumpsuit design
- Cruiser suit is available in 3mm, 5mm and 7mm options
- Higher stretch neoprene in the extremities allows for greater flexibility
- Heavy-duty roughskin kneepads
- Constructed in highly flexible titanium lined 3mm/5mm/7mm neoprene for maximum warmth and flexibility
- Advanced stretch neoprene is elastic enough to make donning simple, yet resists compression enough to maintain warmth
- Though a budget suit, the Cruiser is built better and incorporates more features than most high-end suits
- Molded rubber shoulder pads protect diver as well as help to hold BC in place
- Smoothskin neck, ankle, wrist, and spine seals lock cold water out and seal body-heated water inside the suit
- All seams double glued and blind stitched with reinforcing stress disks at all seam intersections
- 7mm & 5mm have ankle zippers (3mm Cruiser suit does not)



The ESCAPE jacket comes in both 5mm and 7mm thicknesses. Both are step-in shorty vests that can be used with any jumpsuit of any thickness or style to create a two-piece wetsuit for maximum warmth, or as a stand alone product in warmer waters.

## Escape 7 & 5mm Jacket

7mm ESCAPE HOODED JACKET



5mm ESCAPE JACKET



- Escape 7mm design also includes a built in hood
- Jacket is constructed from titanium lined neoprene throughout
- All seams double glued and blind stitched with reinforcing stress disks at every seam intersection
- Great for layering with any fullsuit of any thickness
- A full length diagonal zipper that fully opens on the left thigh
- Locking plastic zipper to prevent unintended opening

The Elude uses a high stretch open cell neoprene in the arms, legs and upper body reducing water movement and minimizing effort. Double nylon around the waist protects suit from weight belt abrasion and adds warmth to the core.

## Elude

- 5mm jacket with attached hood and beavertail closure
- 5mm long john with high stretch 3mm chest
- Pinnacle's exclusive brown and green camouflage pattern with unique brown sealed seams
- Heavy duty loading pad centered on chest
- Open cell interior sticks to your body for a perfect fit
- Face, wrist, and ankle seals minimize water entry
- Rugged double glued and blind stitched construction
- Robust knee and elbow material for maximum durability
- Excellent for spearfishing or free diving



# WETSUITS

The VENTURE is a 3mm one-piece jumpsuit designed for warm-water scuba diving, snorkeling and other watersports. Highly flexible and lightweight, the Venture is available in both adult and children's sizes.

## Venture

- One piece jumpsuit made of 3mm titanium lined neoprene throughout the suit
- Mesh finish rubber chest, back and wrist panels provide wind resistance ideal for high-speed watersports
- Smoothskin o-ring wrist seals
- 3mm zipper flap with handy key pocket
- All seams are flatlock stitched for added stretch and comfort
- Free wetsuit hanger included with suit
- Lined with comfortable quick-drying, low pile, high-stretch nylon
- Mesh finish on chest provides additional grip for surfing
- Plastic zipper slider and pull with long zipper leash and Velcro™ tie-down
- Visa kneepads cushion the diver's knee and protect the suit, yet are very flexible
- The ideal wetsuit for snorkeling, or other water sport enthusiasts
- Available in men's, women's and children's sizes



The SPIRIT shorty is a comfortable and lightweight suit designed for tropical diving, snorkeling, and general watersports. It is also ideal for use in swimming pools and any other time when a bathing suit does not provide enough insulation. Great for layering.

## Spirit



- Short sleeve and short leg shorty design
- 3mm titanium lined neoprene throughout the suit
- Locking plastic zipper to prevent unintended opening
- Smoothskin mandarin collar with Velcro™ closure provides a snug and comfortable barrier against water entry
- 3mm zipper flap with handy built-in key pocket
- All seams are flatlock sewn to provide greater comfort and flexibility
- Mesh finish on chest panel provides additional grip on surfboards, boogie boards, etc.
- Free wetsuit hanger with every suit
- Ideal for tropical diving and snorkeling, or any other aquatic sport
- Available in men's, women's and children's sizes

A true multipurpose suit, the SHADOW 2 is versatile enough to be used as a warm water suit, a surface watersports suit or a layering beneath other wetsuits or shorties while providing thorough skin protection

## Shadow 2

- More than just a dive skin, this is a true neoprene wetsuit
- 1.5mm thick smoothskin neoprene interior helps to inhibit internal water movement
- Provides complete UV protection
- 1.5mm zipper flap with built-in key pocket
- O-ring wrist, ankle and neck seals
- Flatlock stitching for maximum comfort and flexibility
- Extra-long zipper leash with Velcro™ hold-down
- Sleek, all-black suit has navy blue accent stitching on male; deep red accent stitching on female suits



Pinnacle's V-skin line takes all the technical features that Pinnacle has developed over the years and incorporates them into a layering system that will add significant thermal protection without buoyancy.



V-SKIN SOCK  
details pg 16



V-SKIN GLOVE  
details pg 15



V-SKIN HOOD  
details pg 14

Incorporating Pinnacle's patented Merino™ lining and tri-laminate material with a microporous membrane and high stretch outer lycra. This highly technical combination of materials will form perfectly to the body without causing restriction; the form fit creates the perfect water layer held in place by the impermeable membrane. When out of the water the microporous membrane acts as a barrier eliminating wind chill while allowing excess heat and moisture to escape. With strategically placed highly breathable bi-laminate Merino™ panels, the V-skin line is the most comfortable and thermally efficient product on the market today.

The INFERNO suit is the latest innovation from Pinnacle separating the thermal component out of a wetsuit so that it can be used in any watersports activity. It is the only thermal protection you'll ever need in or around the water.



- The INFERNO can be used on its own, as a tropical dive suit or layered under the ENDEAVOR or BLACK ICE as an extreme coldwater system.
- Bi-laminate merino lined material under the arms is 100% breathable to prevent overheating when out of the water.
- The removable shoulder closure allows you to attach a V-skin Collar, V-skin Merino™ Hood or 5mm Merino™ Hood depending on your preferred use.
- Thumb and heel loops keep suit in place when donning but also allow warm water to circulate through the gloves and boots keeping your extremities warm.
- Chest overprint improves water runoff and wind resistance.



**Pinnacle's 360gram Merino™ fleece in the body, doubling the thermal efficiency in the core where the real work is done**

## Hooded Vest

- The HOODED VEST is the perfect way to add warmth to any wetsuit system without adding buoyancy
- Tri-laminate technical fleece in the body is warm and comfortable
- Bi-laminate merino in the sides is 100% breathable keeping you comfortable out of the water
- Merino™ lining in the hood is naturally antibacterial while increasing warmth and comfort



**A layering system that will add significant thermal protection without buoyancy.**



5mm MERINO  
ZIP-ON HOOD



## Inferno U-skin Zip-on Hood



V-SKIN MERINO  
ZIP-ON HOOD

- Zips straight on to any Inferno suit

# CHILDREN'S SUITS

The SALTY DOG KIDS range incorporates the latest high-tech materials into a watersports garment that will keep kids comfortable and sun protected while having fun in the water



12



SALTY LONG SLEEVE



- Lycra collar is comfortable and reduces any irritation
- Tri-laminate technical fleece in the body is warm and comfortable while creating a wind barrier
- Bi-laminate Merino™ lined lycra in the sides are 100% breathable allowing for hours of fun without overheating
- Lycra arms are UV 50+ providing sun protection and unrestricted movement
- Water repellant finish on the outside helps water run off reducing wind chill
- Shorty suit has a front entry zip allowing children to get the suit on and off easily themselves



SALTY SHORT SLEEVE



SALTY SHORTY



The ELASTIPRENE is the ideal fullsuit for children, it can be worn by itself in warm or temperate waters; or teamed with a Escape 5mm Jacket in colder waters

## Elastiprene 5mm



- Elastiprene's exterior lining is highly resistant to snags and pilling
- 5mm Elastiprene throughout the suit
- Wrist zippers for easy donning
- Proprietary soft-brushed lining throughout the suit
- 7mm thick spine pad protects back and reduces internal water movement
- Spine pad is lined with nylon flap to aid zipper movement
- Roll neck collar with Velcro™ closure is more comfortable than conventional necks and creates a better seal
- Heavy-duty roughskin kneepads are incredibly durable, yet very flexible
- Printed rubber shoulder pads protect diver and suit as well as help keep BC in position
- 8" gusseted ankle zippers with smoothskin sealing surfaces
- Locking plastic zipper to prevent unintended opening
- All seams double glued and blind stitched with reinforcing stressdisks at all seam intersections
- Free wetsuit hanger included with suit

The children's VENTURE is a 3mm one-piece jumpsuit designed for warm-water scuba diving, snorkeling and other watersports. Highly flexible and lightweight.

## Venture 3mm



- One piece jumpsuit made of 3mm titanium lined neoprene throughout the suit
- Skin-out rubber chest, back and wrist panels provide wind resistance ideal for high-speed watersports
- Smoothskin o-ring wrist seals
- 3mm zipper flap with handy key pocket
- All seams are flatlock stitched for added stretch and comfort
- Free wetsuit hanger included with suit
- Lined with comfortable quick-drying, low pile, high-stretch nylon
- Mesh finish on chest provides additional grip for surfing
- Plastic zipper slider and pull with long zipper leash and Velcro™ tie-down
- Visa kneepads cushion the knee and protect the suit, yet are very flexible



## Children's Escape



Children's  
5mm ESCAPE JACKET  
details pg 9

## Children's Spirit Shorty



Children's  
3mm SPIRIT SHORTY  
details pg 10

# HOODS AND VESTS

14



## Merino Zippered

- Available in 5mm and 7mm
- All Merino™ hoods are equipped with gusseted rear zippers, making donning and doffing easier
- Merino™ lining adds warmth and is naturally antibacterial
- 3mm smoothskin face seal
- Patented neck sealing system mates with neck of wetsuit



## Zippered Drysuit Hood

- 7mm Merino™ Drysuit hood is the ultimate drysuit hood, with all the features of the 5mm and 7mm Merino™ Hood, but built in a short-neck drysuit style
- Exterior smoothskin lining around face seals well with full face masks



## Standard Hood

- Available in sizes 7mm, 5mm and 3mm
- Non-direct venting system
- Double glued and blind stitched
- Trimmable face seal
- Smoothskin bib for a snug seal



## Drysuit Hood

- The 7mm Drysuit hood ensures maximum drysuit system performance
- Reflective forehead patch for easier diver recognition
- Non-direct venting system
- Trimmable face seal



## U-skin Hood

- Lightweight V-skin hood controls hair, protects from the elements and adds warmth
- Super stretch Lycra allows snug yet comfortable fit
- Merino™ lining is naturally antibacterial
- Provides insulation without causing overheating
- Packs up very small for travel



## 3mm Beanie

- Design allows it to be packed up small enough to fit into a BC pocket, so it can be donned in the middle of a dive
- 3mm titanium lined neoprene
- Velcro™ closure tab on chin strap



## Merino Hooded Vest

- 5mm Merino™ lined hooded vests are the ultimate in layering garments
- Provides additional warmth when layered under a cold water suit
- Patented neck seal system keeps water out and automatically adjusts to depth



## 3mm Merino Vest

- 3mm Merino™ lined neoprene vest
- Provides additional warmth when layered under a cold water suit
- Double glued and blind stitched construction
- Great for any aquatic sport

## Merino Neo 5



- 5mm neoprene across the back of the hand provides greater warmth
- 4mm neoprene on the palm and inside of the fingers allows for greater dexterity and more flexibility
- Merino™ lining adds significant warmth without adding bulk
- Wrist strap is fitted with rubber grip tab and a Velcro™ closure

## Merino Karbonflex



- 4mm titanium lined neoprene throughout the glove
- TW Flex 4mm neoprene provides optimum balance of warmth and dexterity
- Merino™ lining adds significant warmth
- Kevlar™ palm and fingers protect the divers hand
- Wide elastic wrist strap with Velcro™ closure and rubber grip tab

## Neo 3 & 5



- Velcro™ closure and rubber grip tab on wrist strap
- Visa palm material protects the hand and provides excellent grip
- 3mm/5mm titanium lined neoprene throughout the glove
- All seams are glued and blind stitched

## Karbonflex XT



- Kevlar™ palm, thumb, forefinger and fingertips for maximum protection
- High stretch 2mm neoprene provides the optimum balance of warmth and dexterity yet strong enough to use to catch spiny lobsters
- Seams are sealed making them extra tough

## Amara 2mm



- 2mm titanium lined neoprene across the back of the hand
- Tough Amara leather palm and finger covering
- Lightweight and flexible enough for warm water use
- The gold standard for all warm water gloves

## Attack 2mm



- 2mm Elastiprene gives superior flexibility
- Perfect for anyone who demands excellent dexterity
- Rubber friction dots cover glove to ensure a great grip

## U-skin Glove



- The V-SKIN glove adds warmth and comes with a anti-slip printed palm providing grip with excellent dexterity
- Technical fleece inside the wrists allows warm water to flow around the hands keeping them warm
- Merino™ lining is antibacterial

## Merino Liner



- Constructed from Pinnacle's patented Merino™ lining
- The naturally antibacterial characteristics of Merino™ lining are more hygienic than synthetic gloves
- Adds significant warmth to any glove without adding buoyancy
- Great for skiing, hiking or any outdoor adventure

# BOOTS

16



## Tecline Overboot

- Fin strap cleat
- May be used with neoprene or latex socks
- Ports on instep allow for easy drainage
- Rugged soles for walking on any surface
- Pull tab at rear of boot eases donning

• Available in sizes 5 to 15



## Apex XT 6mm

- 6mm titanium lined neoprene
- Foxing strap over instep provides lateral support, even when wet
- Heavy duty protective toe and heel caps
- Fin strap cleat
- Reinforcing plate in sole improves stability while protecting against sharp objects

• Available in sizes 4 to 15



## Venturer 5mm

- 5mm neoprene throughout
- Heavy duty protective toe cap
- #10 YKK locking zipper
- Fin strap cleat
- Zippered opening allows for easy donning and doffing
- Heavy duty rubber sole protects the foot from rough surface

• Available in sizes 4 to 15



## Splash 3mm

- ¾ height design
- 3mm neoprene with protective rubber toe cap
- Zippered opening allows for easy donning and doffing
- Fin strap cleat
- Heavy duty rubber sole protects the foot from rough surfaces

• Available in sizes 4 to 15



## Surf Comber 2mm

- Low cut design
- 2mm neoprene
- Mesh allows for ventilation and drainage
- Heavy duty nylon provides support and protection
- Dual density rubber soles protect the feet for any aquatic support

• Available in sizes 4 to 16



## U-Skin Sock

- Technical fleece inside allows warm water to flow around the feet keeping them warm
- Merino™ lining underfoot is antibacterial
- Anti slip printed sole provides grip when on boat
- Ideal for tropical diving or adding warmth to any boots





## Cumfo Belt



- Stainless steel buckle
- Strong 2" webbing
- Self-draining pockets hold up to 7-pound block or shot weights
- Rubber friction strip prevents belt slippage
- Two thermoplastic d-rings
- Available in colors Black, Blue and Yellow
- Available in four sizes to fit waists from 25" to 55"

## Standard Weight Belt



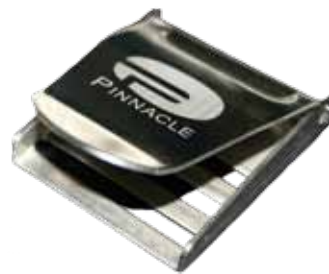
- A basic weight belt that can be custom fitted.
- Stainless steel buckle
- 55" of 2" wide webbing
- Webbing can be trimmed to any length
- Available in colors Black, Blue and Yellow
- Packaged in a mesh carry bag

## Mask Strap Cover



- Mask strap cover makes mask easily identifiable and makes mask strap much more comfortable.
- All neoprene construction
- Covers rubber strap on any mask, helping to slide on and off easier without pulling hair
- Adds buoyancy to a dropped mask
- Available in both Black and Blue

## Stainless Buckle



The same stainless steel buckle that is featured on the Cumfo Belt and the Standard Weight Belt is available for making weight belts and for replacement use on harnesses, BCs and bags.

## Pacific Bag



- Exterior full length fin pocket
  - Padded and detachable end pocket
- 34" x 15" x 13" (6,630 cu. in.)

## Freediver Bag



- Provides enough length to hold free diving fins
  - 'D' zipper for easy entry
  - Constructed from heavy-duty Cordura
- 37" x 15" x 13" (6,240 cu. in.)



FEMALE SIZING Wetsuit/Drysuit	US DRESS SIZE	HEIGHT (ft/inch) (cm)		WEIGHT (lbs) (kg)		CHEST (inch) (cm)		WAIST (inch) (cm)		HIPS (inch) (cm)		INSEAM (inch) (cm)	
XXS (*)	0	4'8"-4'11"	142-155	90-110	41-50	29-35	71-86	21-24	53-61	30-34	76-86	23-26	58-56
XS	0-2	4'10"-5'1"	147-157	100-125	45-57	30-34	76-86	22-25	56-63	32-36	81-91	24-27	61-68
SMALL	0-4	5'-5'3"	152-160	110-135	50-61	32-36	81-91	24-27	61-68	34-38	86-96	25-28	63-71
MED.SHORT (*)	4-8	5'-5'3"	152-160	115-140	52-64	34-38	86-91	26-30	66-76	36-40	91-101	25-28	63-71
MEDIUM	4-8	5'2"-5'5"	157-165	120-145	55-56	34-38	86-91	26-30	66-76	36-40	91-101	26-29	66-73
MED.TALL (*)	4-8	5'4"-5'7"	162-170	125-150	57-68	34-38	86-91	26-30	66-76	36-40	91-101	27-30	68-76
ML SHORT (*)	8-12	5'2"-5'5"	157-165	125-150	57-68	36-40	91-101	28-32	71-81	38-42	96-106	26-29	66-73
ML	8-12	5'4"-5'7"	162-170	130-155	59-70	36-40	91-101	28-35	71-81	38-42	96-106	27-30	68-76
LARGE SHORT (*)	10-14	5'4"-5'7"	162-170	140-165	64-75	38-42	96-106	30-34	76-86	40-44	101-111	27-30	68-76
LARGE	10-14	5'6"-5'9"	167-175	145-170	66-78	38-42	96-106	30-34	76-86	40-44	101-111	28-31	71-79
XL	12-18	5'8"-5'11"	172-180	160-185	72-84	40-44	101-111	32-36	81-91	42-46	106-117	29-32	73-81
XXL (*)	14-20	5'10"-6'1"	177-185	175-200	80-92	42-46	106-117	34-38	86-96	44-48	111-122	30-33	76-84

(\*) Not all sizes are available in all products.

MALE SIZING Wetsuit/Drysuit	HEIGHT (ft/inch) (cm)		WEIGHT (lbs) (kg)		CHEST (inch) (cm)		WAIST (inch) (cm)		HIPS (inch) (cm)		INSEAM (inch) (cm)	
XS (*)	5'3"-5'6"	160-167	120-145	54-66	32-36	81-91	26-30	66-76	32-36	81-91	25-28	63-71
SMALL	5'5"-5'8"	165-172	135-160	61-73	34-38	86-96	28-32	71-81	34-38	86-96	26-29	66-73
MEDIUM	5'7"-5'10"	170-177	150-175	68-80	36-40	91-101	30-34	76-86	36-40	91-101	27-30	68-76
MED.TALL (*)	5'9"-6'	176-182	155-180	70-82	36-40	91-101	30-34	76-86	36-40	91-101	28-31	71-79
ML	5'9"-6'	176-182	165-190	75-86	38-42	96-106	32-36	81-91	38-42	96-106	28-31	71-79
ML.TALL (*)	5'11"-6'2"	180-187	170-195	77-87	38-42	96-106	32-36	81-91	38-42	96-106	29-32	73-81
LG.SHORT (*)	5'9"-6'	176-182	185-210	84-95	40-44	101-111	34-38	86-96	40-44	101-111	28-31	71-79
LARGE	5'11"-6'2"	180-187	190-215	86-98	40-44	101-111	34-38	86-96	40-44	101-111	29-32	73-81
LARGE.TALL (*)	6'1"-6'4"	185-193	195-220	87-100	40-44	101-111	34-38	86-96	40-44	101-111	30-33	76-84
XL SHORT (*)	5'11"-6'2"	180-187	200-225	91-102	42-46	106-117	36-40	91-101	42-46	106-117	29-32	73-81
XL	6'1"-6'4"	185-193	205-230	93-105	42-46	106-117	36-40	91-101	42-46	106-117	30-33	76-84
XXLS (*)	6'1"-6'4"	185-193	215-245	98-111	44-48	111-122	38-42	96-106	44-48	111-122	30-33	76-84
XXL	6'3"-6'6"	190-198	220-250	100-114	44-48	111-122	38-42	96-106	44-48	111-122	31-34	79-86
XXXL	6'5"-6'8"	195-203	240-270	109-111	46-50	117-127	40-44	101-111	46-50	117-127	32-35	81-89
4XL (*)	6'7"-6'10"	200-208	265-295	120-134	48-52	122-132	42-46	106-117	48-52	122-132	33-36	84-91
KING 1 (*)	5'9"-6'	172-180	290-320	132-145	50-54	127-137	44-48	111-122	50-54	127-137	27-30	68-76
KING 2 (*)	5'10"-6'1"	177-188	240-275	109-123	46-50	117-127	40-44	101-111	46-50	117-127	28-31	71-79

(\*) Not all sizes are available in all products.

MERINO CLOTHING	HEIGHT (ft/inch) (cm)		CHEST (inch) (cm)		WAIST (inch) (cm)		HIPS (inch) (cm)	
XS	5'4"	163	32	81	28	71	33	84
SMALL	5'6"	169	35	89	31	79	36	91
MEDIUM	5'9"	175	38	97	34	86	39	99
LARGE	5'11½"	182	41	104	37	94	42	107
XL	6'2"	188	44	112	40	102	45	114
XXL (*)	6'4"	194	47	119	43	109	48	122

(\*) Measurements refer to body size, not garment dimensions. If body measurements are midway between sizes, go to the smaller size for a tighter fit or a larger size for a looser fit.

CHILDREN'S SIZING/ AGE	HEIGHT		WEIGHT		CHEST	
	(ft/inch)	(cm)	(lbs)	(kg)	(inch)	(cm)
XXS (2)	3' -3'5"	90-103	35-50	16-23	23-27	58-68
XS (4)	3'3"-3'8"	98-111	40-55	18-25	24-28	60-70
SMALL (6)	3'6"-4'	107-122	45-60	21-27	25-29	63-73
MEDIUM (8)	3'9"-4'3"	114-129	50-65	22-30	26-30	66-76
LARGE (10)	4'2"-4'8"	127-142	55-75	25-34	28-32	71-81
XL (12)	4'7"-5'1"	139-154	65-90	30-41	29-33	73-83

Children's sizes available in the Spirit 3mm, Venture 3mm and Elastiprene 5mm wetsuits, Escape 5mm jacket and Salty Dog range. Not all sizes are available in all products.

HOOD SIZING	HEAD SIZE		HAT SIZE
	(inch)	(cm)	
XS	18-20	45-50	5 $\frac{3}{4}$ - 6 $\frac{3}{8}$
SMALL	19-21	48-53	6 - 6 $\frac{5}{8}$
MEDIUM	20-22	51-56	6 $\frac{3}{8}$ - 7
MED.LARGE	21-23	53-58	6 $\frac{5}{8}$ - 7 $\frac{3}{8}$
LARGE	22-24	56-61	7 - 7 $\frac{5}{8}$
XL	23-25	58-63	7 $\frac{3}{8}$ - 8
XXL	24-26	61-66	7 $\frac{5}{8}$ - 8 $\frac{3}{4}$

(\*) Head size is measured as circumference at point level with eyebrows. Not all sizes are available in all products.

BOOT SIZING	US MEN'S	US WOMEN'S	UK MEN'S	EUR SHOE	JAPAN SHOE	KOREA SHOE	INCHES	CM
4	4	5.5	3	35.5	22	232	9 $\frac{1}{8}$	23.1
5	5	6.5	4	37	23	238	9 $\frac{3}{8}$	23.8
6	6	7.5	5	38	24	245	9 $\frac{5}{8}$	24.5
7	7	8.5	6	39	25	251	9 $\frac{7}{8}$	25.1
8	8	9.5	7	41	26	257	10 $\frac{1}{8}$	25.8
9	9	10.5	8	43	27.5	267	10 $\frac{1}{2}$	26.7
10	10	11.5	9	44	28	270	10 $\frac{3}{8}$	27.2
11	11	12.5	10	45	29	276	11	27.6
12	12	13.5	11	46	30	283	11 $\frac{1}{8}$	28.3
13	13	14.5	12	47	31	288	11 $\frac{1}{4}$	28.8
14	14	15.5	13	48.5	31.5	295	11 $\frac{1}{2}$	29.2
15	15	16.5	14	50	33	302	11 $\frac{5}{8}$	29.8





Pinnacle Aquatics | 7650 Marathon Drive | Suite E | Livermore | CA 94550  
Order toll free 866.590.8300 | Tel 925.606.8300 | Fax 925.606.8305  
info@PinnacleAquatics.com

[www.PinnacleAquatics.com](http://www.PinnacleAquatics.com)